

dialog W 2 CM R

Double conductivity measuring and control instrument

- Easy and safe operation by plain text menu guidance
- Log book function
- Graphical trend display of the last 3 h
- Linear and non-linear special pure water temperature compensation



applications



Cooling And Boiler Feed Water



Waste Water Treatment



Drinking Water / Beverages



Process Water

description

The dialog W 2 CM R is a sophisticated instrument for the precise measurement and control of the conductivity (double/ difference measurement). It is available in a wall mounted housing.



dialog W 2 CM R

Double conductivity measuring and control instrument

particular characteristics

- Variable assignment of relay and current outputs
- 2 limit values with delay
- Dosage check
- Serial interface RS 485
- 3 scaleable, galvanically isolated 0/4 .. 20 mA outputs
- 2 separate PID-controller
- Real time clock
- Background illuminated two-line graphical display
- Password function

information

Measuring and control instruments of the dialog series are also available for 117 VAC and 24 VDC (only wall mounted housing) - without additional charge.



dialog W 2 CM R

Double conductivity measuring and control instrument

technical data

measuring parameter

Conductivity (conductive)	0 .. 200.0 $\mu\text{S/cm}$
	0 .. 20 $\text{M}\Omega\text{cm}$
	0 .. 20.00 $\mu\text{S/cm}$
	0 .. 200.00 $\mu\text{S/cm}$
	0 .. 2.000 mS/cm
	0 .. 20.00 mS/cm
	0 .. 200.00 mS/cm

input characteristics

accuracy	1% of range
temperature measuring range	-30 .. +140°C
temperature coefficient	adjustable 0,0 .. 8,0 % /°C or non-linear

output characteristics

output signal	3 0/4 .. 20 mA (scaleable, galvanically isolated)
load	max. 500 Ω
registration range	Free scaleable within the measuring range
serial interface	RS 485
	Baud rate 9600
	data format 8 bit

power supply

line voltage	24 / 117 / 230 VAC, +6 / -10 %, 40 .. 60 Hz
	optional: 24 VDC
power consumption	10 VA

ambient conditions

ambient temperature	operation 0 .. +50°C, storage -20 .. +65°C
relative humidity	max. 90% rH at 40°C (non-condensing)
protection class	

wall mounted housing IP 65

controller

control response	On/off controller (adjustable hysteresis) P/PI/PID-controller (pulse-pause, pulse-frequency or continuous controller output)
relays	3 relays, each with potential-free CO contact, max. 250 V, 6 A, 550 VA
onset delay	0 .. 200 sec till controller active
digital input	Controller stop via external contact



dialog W 2 CM R

Double conductivity measuring and control instrument

certificates and approvals

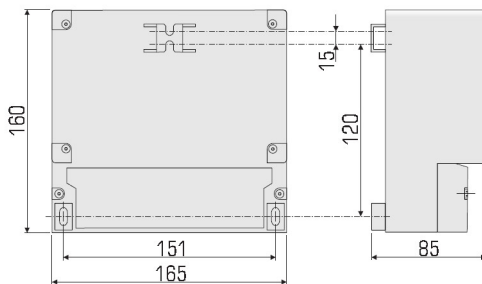
CE-symbol

Declaration of conformity: The product meets the requirements of the harmonized European standards. It thus complies with the legal requirements of the EC directives.

The manufacturer confirms successful testing of the product by affixing the CE symbol.

mechanical construction - wall mounted housing

material	ABS
dimensions	165x160x85 mm
weight	1.25 kg
connection	Spring-loaded terminals



accessories

accessories

PKV 30-DPS

Converter for PROFIBUS-DP for max. 32 instruments of the K 100 oder dialog series. Converting of RS 485 to PROFIBUS-DP interface, instrument in a housing for installation on a top hat rail, dimension 105 X 105 x 80 mm (HxBxT), connection cable inclusive

S-341 data logger

The bus data logger S-341 on the base of the RS-485 with Kuntze protocol reads, shows, and stores measuring data of up to 10 Kuntze instruments with up to 8 parameters each.

